

CERTIFIED LAND CORNER RECORDATION

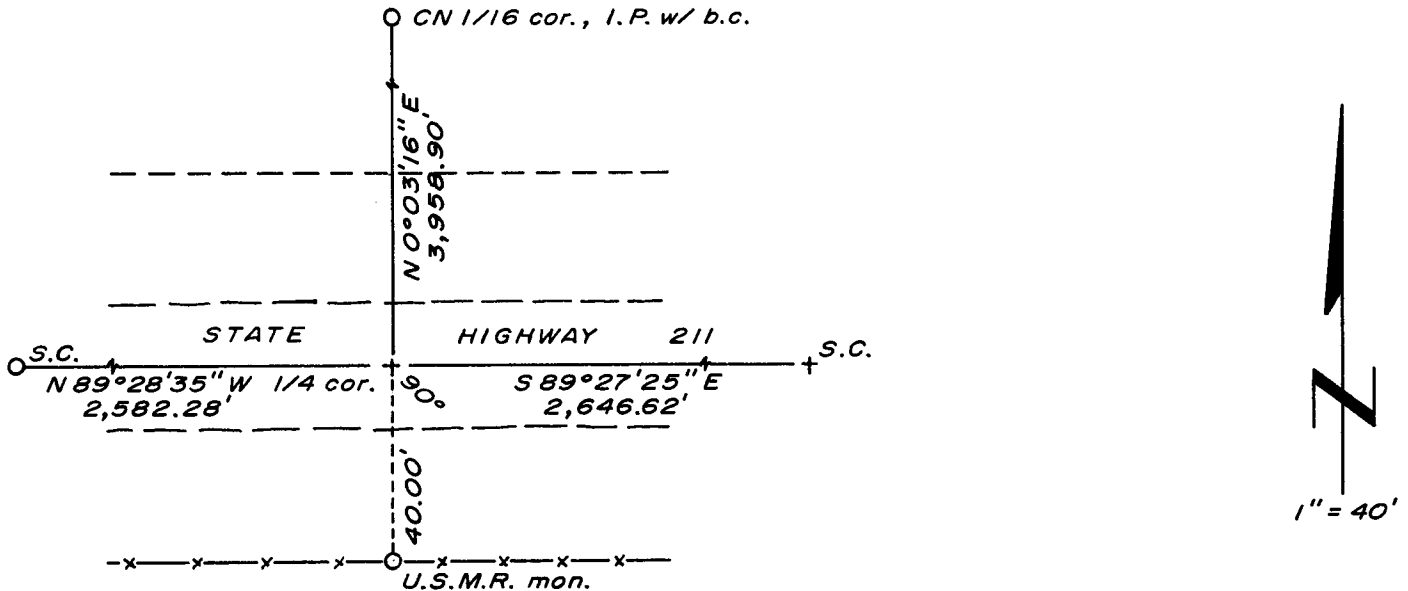
<p>LOCATION</p> <p>$\frac{1}{4}$ S.34 $\frac{1}{4}$ S. 3</p> <p>T.15N., R.67W. T.14N. 6th P.M.</p>	<p>DESCRIPTION OF CORNER EVIDENCE FOUND, AND ORIGINAL RECORD (If known)</p> <p>Found United States Military Reservation concrete monument with iron rod center as shown by sketch.</p> <p>G.L.O. record - Lime Stone 22 x 10 x 4 (1870).</p>
--	--

DESCRIPTION OF MONUMENT AND ACCESSORIES ESTABLISHED TO PERPETUATE THE ORIGINAL LOCATION OF THIS CORNER:

At the corner: No monument set.

Accessories: U.S.M.R. monument bears S 0°32'35" W, 40.00 feet distant.

SKETCH, WITH COURSE AND DISTANCE TO ADJACENT CORNER IF DETERMINED IN THIS SURVEY.
(May Sketch or Paste Reproduction on Reverse Side.)



Basis of Bearing - By solar observation.

I, R.L. Hudson certify that I have carefully performed ~~or reviewed~~ the work done on the diagrammed corner as reported on this recordation form and approve the same.

R.L. Hudson Wyoming L.S. No. 519
 Signature of Surveyor Registration No.

STATE OF WYOMING,
Office of Clerk and Recorder,
County of Taramie

This "corner record" was filed for record on the 24 day of June, 1974, was noted on the cross-index plat and is assigned page No. _____, in book No. _____.

John B. Huismen
 County Official

Cross Index No. <u>215</u>	T. <u>15</u>	R. <u>67</u>	<u>7</u> Mer.
<u>A15</u>	T. <u>14</u>	R. <u>67</u>	<u>6</u> Mer.
_____	T. _____	R. _____	Mer.
_____	T. _____	R. _____	Mer.
_____	T. _____	R. _____	Mer.
_____	T. _____	R. _____	Mer.
_____	T. _____	R. _____	Mer.

Photographed

Indexed

Filed

Assessed

The State of Wyoming
County of Laramie

This instrument was filed for record

at 10:53 o'clock 4 M. on the

24 day of June

A. D. 19 24 and duly recorded in

Book _____ on page _____

John B. Williams

County Clerk & Ex-Officio Registrar of Deeds

By *JB* Deputy